



Unit Coolers

TA Kit PRK

Original notice
Notice originale

N° IN0022000-A
02.2014



SI2052 pump (PRK kit)
Pompe SI2052 (kit PRK)

INSTALLATION INSTRUCTIONS NOTICE TECHNIQUE D'INSTALLATION



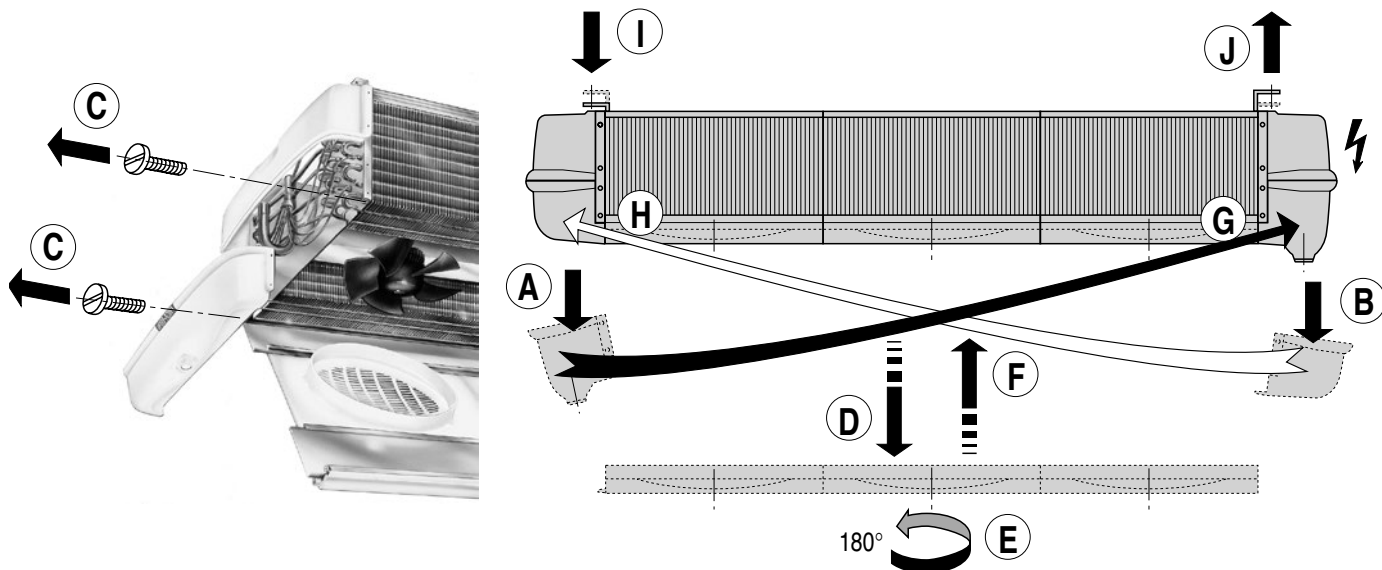
FRIGA-BOHN



HK®
REFRIGERATION

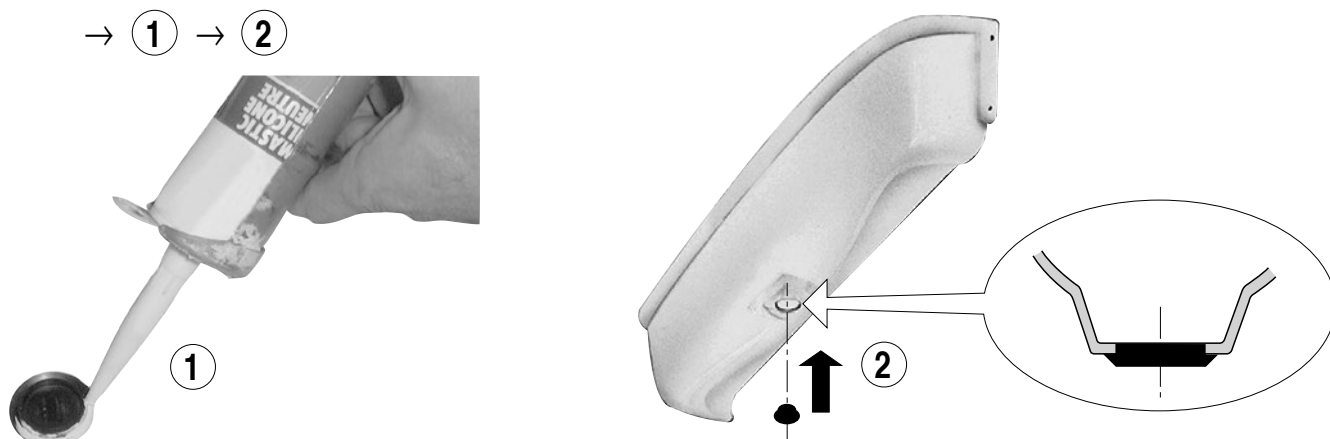
1. CASING INVERSION - INVERSION CARTER

→ A → B → C → D → E → F → G → H → I → J



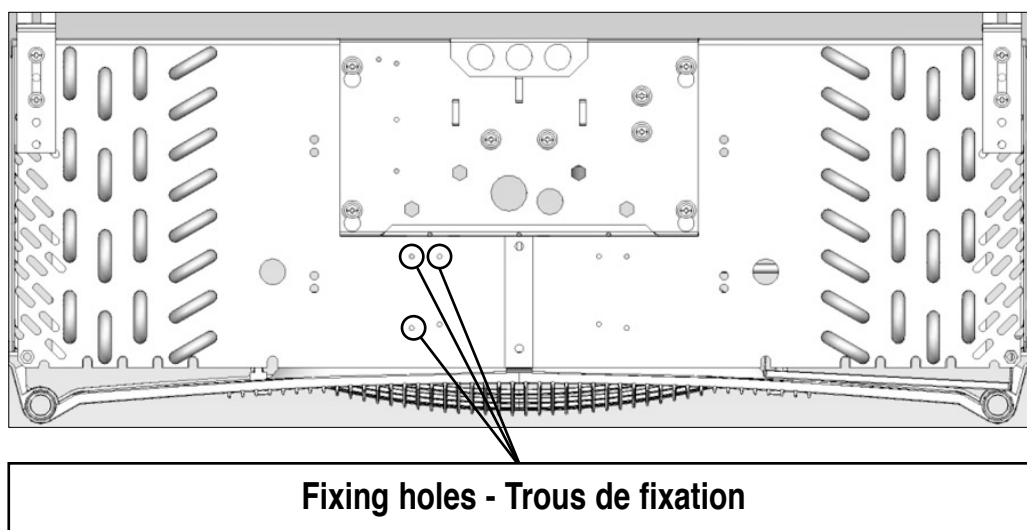
2. SEALING OF DRAIN HOLE - OBTURATION ET ÉTANCHÉITÉ DU TROU VIDANGE

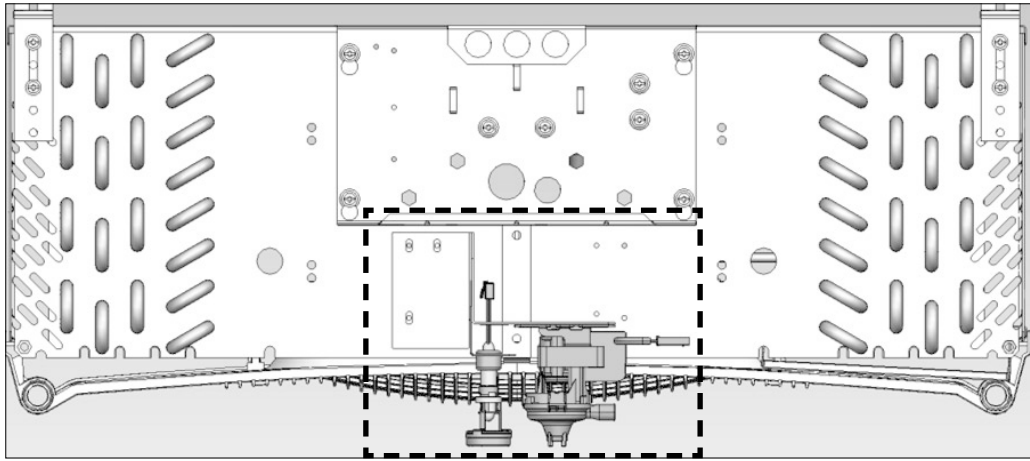
→ 1 → 2



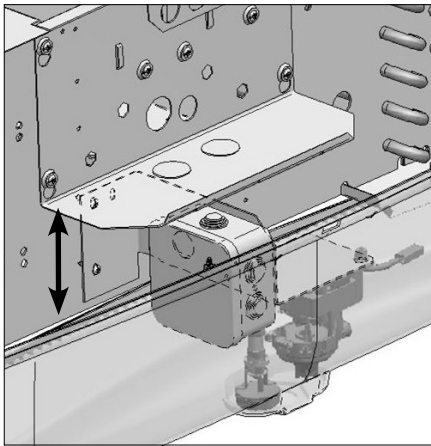
3. MOUNTING AND ADJUSTMENT OF PUMP - MONTAGE ET AJUSTEMENT DE LA POMPE

A. Fixing the pump support - Fixation du support de pompe



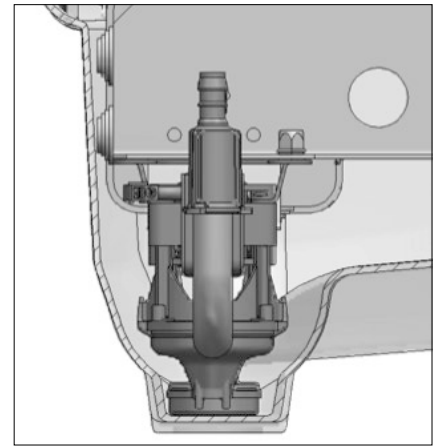
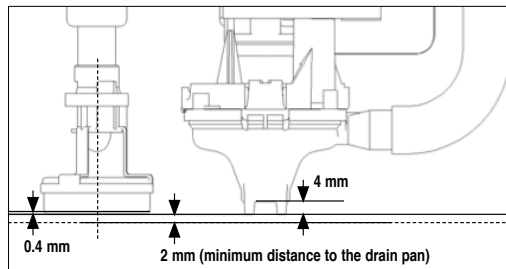


B. Vertical adjustment of pump - Ajustement vertical de la pompe

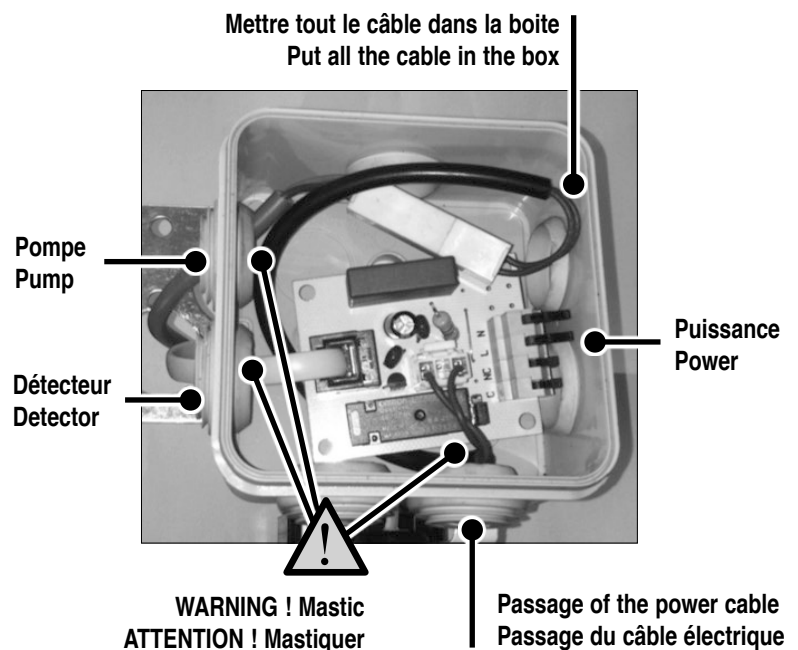
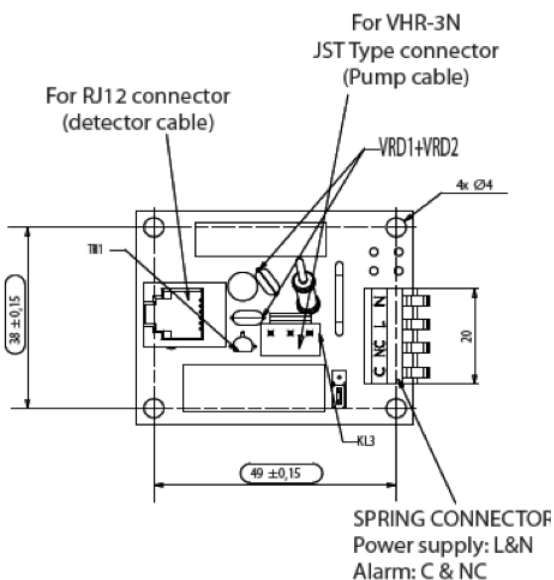


Minimal distance sensor / pump inlet: 3.6 mm
Minimal distance pump pin / drain pan: 2 mm

Distance minimale capteur / entrée pompe: 3.6 mm
Distance minimale axe de pompe / égouttoir: 2 mm

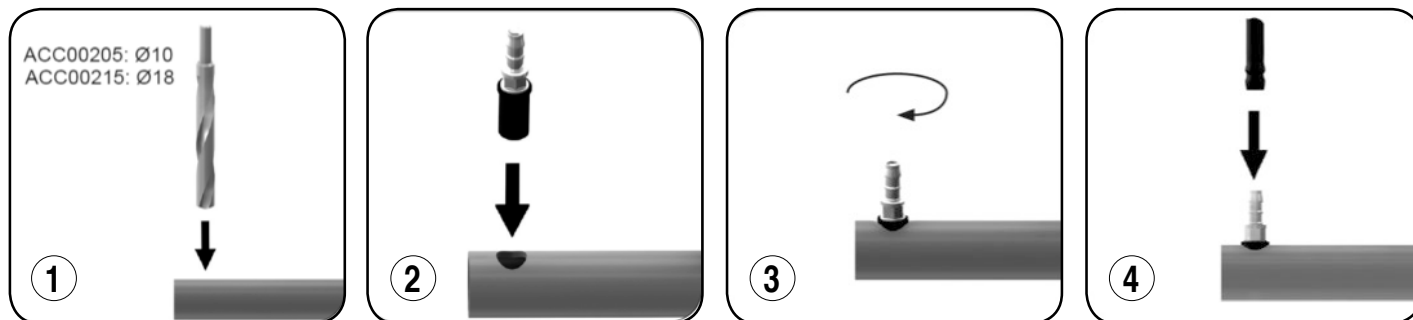


4. ELECTRICAL CONNECTION OF PUMP AND SENSOR RACCORDEMENT ELECTRIQUE DE LA POMPE ET DU CAPTEUR



5. HOSE CONNECTION ON A PVC PIPE CONDENSATE DRAIN RACCORDEMENT DE LA VALVE AU TUYAU PVC D'ÉVACUATION DES CONDENSATS

ACC00205 - ACC00215



ACC00215

